

CHILD CARE CENTER/GROUP INSPECTION FORM

INITIAL UNANNOUNCED FULL/PARTIAL FOLLOW UP LOCATION CHANGE OTHER

Program Name: Town and Country Early Learning pending	License Number:	Date of Inspection: 7/31/23	Time of Arrival: 8:30 AM
Address: 111 Norwalk Ave	Expiration Date:	Licensed Capacity:	Under 3 Capacity:
Town: Colchester, CT 06415	Telephone: 203 859 0424	# of children present: 0	# of staff present: 0
Operator: Child Development Professionals of Colchester, Inc	Director: Debara Murphy		
Email: deba@townandcountryec.com	Head Teacher: Debara Murphy		
Hours of Operation: 6:30 AM - 6 PM M-F	Summer Care: open		
Ages Served: toddlers - 5y5	Instruction Codes: N/A = Not applicable at this time √ = Compliance/No violation found O = Non-compliance/Violation found		
Endorsements: <input checked="" type="checkbox"/> Under Three (6wks - 36m) <input checked="" type="checkbox"/> Preschool (3y - 5y) <input type="checkbox"/> School Age (5y & up) <input type="checkbox"/> Night Care (6wks & up)			

Licensure Procedures 19a-79-2a

1. Local Health Date: _____

Administration 19a-79-3a

- 2. New Staff-Employee Orientation
- 3. Annual Staff Policy Training
- 4. Documentation of Behavior M. Tech Discussed w/Parents
- 5. Notification of Change
- 6. Policies: Discipline/Supervision/Child Protection/General Operating Policies/Personnel Policies/Closing Time Policy
- 7. Daily Attendance Records: Children/Staff

Items Posted: Conspicuous/Accessible

- 8. License
- 9. Current Fire Marshal Certificate Date: _____
- 10. OEC Complaint Procedure
- 11. Food Service Certificate Date: _____
- 12. Menus
- 13. Emergency Plans
- 14. No Smoking Signs
- 15. Radon Test (Y/N) Date: _____ Results: _____
- 15a. Developmental Milestones

Staffing 19a-79-4a

- 16. Staff Health Records/TB Tests
- 17. Professional Development
- 18. Disciplinary Actions
- 18b. Background Checks
- 19. Designated Head Teacher/60%
- 20. Two Staff Present
- 21. Ratio: 1 Staff to 10 Children
- 22. Group Size: Maximum 20 Children
- 23. Designated Director/Training
- 24. CPR Certified Staff
- 25. First Aid Trained Staff

Consultants

26. Agreements/Contracts (Complete/Signed Annually)

	Contracts	Logs
Education	<input checked="" type="checkbox"/>	<input checked="" type="checkbox"/>
Health	<input checked="" type="checkbox"/>	<input checked="" type="checkbox"/>
Social Service	<input checked="" type="checkbox"/>	<input checked="" type="checkbox"/>
Dental	<input checked="" type="checkbox"/>	<input checked="" type="checkbox"/>
Dietitian	<input type="checkbox"/>	<input type="checkbox"/>

27. Logs/Visits Documented

Swimming: (Y/N)

28. Non-Swimmers Identified

Swimming cont.

- 29. Staff/Child Ratios
- 30. CPR Certified Staff (20 years of age)
- 31. Lifeguard Certified/Supervision

Record Keeping 19a-79-5a

- 32. Enrollment Information
- 33. Emergency Medical Permission
- 34. Authorized Released Permission
- 35. Field Trip Permission
- 36. Transportation Permission
- 37. Child Health Records/Immunizations/TB
- 38. Individual Care Plan (Signed by Parent/Staff)
- 39. Injury/Illness/Accident Reports

Health and Safety 19a-79-6a

- 40. Nutritious Snacks/Meals (Required Food Groups)
- 41. Proper Refrigeration
- 42. Kitchen Separated
- 43. Hand Washing Before Eating/Food Handling
- 44. First Aid Kit(s): Indoor/Outdoor/Field Trip/Inventory

Physical Plant 19a-79-7a

- 45. License Premise: Clean/Good Repair/Hazard Free
- 48. Sanitary Drinking Fountains/Disposable Cups
Water Supply: Public/Well
- 49. Lead Water Test Date: **6/14/23**
Bacterial/Chemical Test (Y/N) Date: _____
- 50. Walkways Maintained
- 51. Designated Staff Toilet/Sink
- 52. All Openings for Ventilation Screened
- 53. Windows Protected to Prevent Falls
- 54. Glass Protected to 36"
- 55. Overhead Doors Locking Devices/Spring Protectors
- 56. Exits/Hallways and Stairs Unobstructed
- 57. Individual Storage of Clothing/Bedding
- 58. Smoking Prohibited
- 59. Matches/Lighters Inaccessible
- 60. Electrical Safety: Outlets/Cords
- 61. Toileting Needs Met
- 62. Required Toilets/Sinks/Supplies
- 63. Potty Chairs: Nonporous/Emptied/Disinfected
- 64. Hand Washing After Toileting: Staff/Children
- 65. Ventilation in Toilet Room
- 66. Air Temp 65°, Thermometer Affixed

Signature of OEC Representative: **Chad Kellen**

Written Corrective Action Plan Due to OEC by: **pending prc to open**

Signature of Person in Charge: **Debara Murphy**

Print name: **Kellen Chad Johanne Dato**

Print name: **Debara Murphy**

CHILD CARE CENTER/GROUP INSPECTION FORM

Program Name: Town and Country Early Learning	License Number: pending	Date of Inspection: 7/31/23
---	-----------------------------------	---------------------------------------

Physical Plant continued:

- 67. Water Temperature 60°-115°
- 68. Portable Space Heaters
- 69. Walls/Ceilings/Floors/Rugs: Clean/Good Repair
- 70. Rugs Secure
- 71. Hot Water/Steam Pipes Protected
- 72. Working Phone on Each Level
- 73. Emergency Numbers Posted
- 74. Adequate Lighting: 50/30 Candle Feet
- 75. Light Fixtures Shielded/Shatter Proof
- 76. Potentially Hazardous Substances Locked
- 77. Garbage/Rubbish Disposed Daily
- 78. Stairs Protected/Good Repair/Handrails
- 79. Pets: Maintained/Care Plan (Y/N)
- 80. Operable CO Detector on Each Level (Y/N)
- 81. Program Space/Adequate Sq. Ft. Per Child
- 82. Equipment: Good Repair/Safe/Non-toxic
- 83. Cots Stored/Maintained/Adequate Number
- 84. Developmentally Appropriate Equipment/Materials
- 85. Hot Tubs/Spas/Saunas: Locked/Inaccessible (Y/N)
- 86. No Weapons/No Facsimile of a Firearm on Premise

Outdoor Space

- 87. Outdoor Space Adequate Sq. Ft. Per Child
- 88. Impact Absorbing Material under Equipment
- 89. Playground Free from Hazards
- 90. Peeling Paint (Y/N) Sample Taken (Y/N)
- 92. Equipment Anchored/Safely Arranged
- 93. Outdoor Play Area Protected/Fenced
- 94. Drinking Water Available/Accessible

Educational Requirements 19a-79-8a

- 95. Written Plan for Daily Program Available to Parents/Staff
- 96. Activity Choices: Developmentally Appropriate/
Flexible/Meets Individual Needs
Program Includes: Indoor/Outdoor, Gross/Fine
Motor Skills, Snacks/Meals,
Rest/Sleep/Quiet Time,
Toileting and Clean Up

Administration of Medications 19a-79-9a

- 97. Written Policies/Procedures
- 98. Training Outline on file
- Nonprescription Topical Medications
- 99. Administration/Parent Permission/MAR
- 100. Labeling/Storage
- Oral/Topical/Inhalant/Injectable Medications
- 101. Med Trained Staff/Certificates
- 102. Authorized Prescriber/Parent Permission/MAR
- 103. Labeling/Storage
- 104. Unused/Expired Meds Returned/Disposed
- Self-Administration
- 105. Authorized Prescriber/Parent Permission/MAR
- 106. Labeling/Storage
- 107. Approved Petition For Special Med Authorization

Under Three Endorsement 19a-79-10

- 109. Approved Endorsement
- 110. Ratio: 1 Staff to 4 Children
- 111. Group Size no Larger than 8
- 112. Physical Barriers/Groups of 8 (Indoors/Outdoors)
- 113. Adequate Sinks in Program Space
- 114. Free Standing/Well-Constructed/Safe Cribs
- 115. Washable Cots
- 116. Chairs for Feeding/Stable/Safety Straps/Locking Tray
- 117. Dev. Appropriate Tables/Chairs/Equipment
- 118. Refrigerators and Food Prep Facilities
- 119. Sturdy/Safety Rail/Nonporous/Exclusive Use
- 120. Washed/Disinfected
- 121. Disposable Paper Sheets
- 122. Covered Waste Receptacle
- 123. Diaper Changing Policy Posted
- 124. Hand Washing Policy Posted
- 125. Individual Storage of Personal Items
- 126. Cribs/Cots Washed/Disinfected
- 127. Under 12 Months Placed on Back for Sleeping
- 128. Alternate Sleep Position/Equip-Medical Document Y/N
- 129. Crib/Bed Used for Infant Sleeping
- 130. Crib/Bed Free from Observable Hazards
- 131. Infant Toys Separate/Washed/Disinfected Daily
- 132. No Toys/Objects Less than 1 1/2" Diameter
- 133. Plastic Bags/Balloons/Styrofoam Objects Inaccessible
- 134. Health Consultant/Documentation of Visits
- 135. Infants Held for Bottles/Individual Attn/Tummy Time
- 136. Written Statement/Feeding Schedule from Parent
- 137. Unused Portions of Liquids Discarded
- 138. Clean Bottles/Disp. Bottles/Approved Bottle Washing
- 139. Food Served from Dish or Whole Jar Served
- 140. Bottles Individually Identified w/Child's Name

Outdoor Play Space-Under Three:

- 141. Play Space Fenced
- 142. Outdoor Equipment: Dev. Appropriate

School Age Children Endorsement 19a-79-11

- 143. Approved Endorsement
- 144. Activity choices appropriate
- 145. Ratio: 1 Staff to 10 Children
- 146. Group Size: Max. 20 Children
- 147. Education Consultant Appropriate

Night Care Endorsement 19a-79-12 (10pm-5am)

- 148. Approved Endorsement
- 149. Written Program Plan/Supervision
- 150. Staff Awake/Available
- 151. Cot/Crib/Bedding/Toiletries/Sleep Apparel
- 152. Individual Storage of Personal Items
- 153. Bedding/Sleeping Apparel Laundered Weekly

Monitoring of Diabetes 19a-79-13 **NONE**

- 154. Written Policies/Procedures
- 155. On Site Staff Trained in First Aid/Glucose Testing
- 156. Training Current/Documented
- 157. Supervision of Self Administration
- 158. Equipment/Supplies: Labeled/Inaccessible
- 159. Signed Agreement w/Parent Regarding Equipment
- 160. Materials Discarded Appropriately
- 161. Authorized Prescriber/Parent Permission
- 162. Documentation of Test Results/Actions Taken
- 163. Daily Written Parent Notifications

Signature of OEC Representative <i>[Signature]</i>	Written Corrective Action Plan Due to OEC by: DB pending pncr to open	Signature of Person in Charge <i>[Signature]</i>
Print Name: Katherine Johanne Dalo		Print Name: Deborah Murphy

SUPPLEMENTAL REPORT OF INSPECTION

Name of Program/Provider: Town and Country Early Learning License # pending Date: 7/31/23

Observations/Corrections needed:

Items not checked marked will be inspected at later date. Items checked were discussed

Room 1: $(16.03 \times 22.54) - (2.10 \times 11.03) - (2.75 \times 9.3) - (1.65 \times 9.1) - (4.09 \times 1.36) = 361.31 - 31.90 = 329.41 \div 35 = 9.4$

Labels: counter/fridge, wall, brick wall

Room 2: $(16.03 \times 20.85) - (11.03 \times 2.10) - (.52 \times 7.7) = 334.22 - 23.56 = 310.66 \div 35 = 8.8$

Labels: counter/fridge, column **OK for 8 children**

Room 3: $(28.83 \times 13.26) - (3.13 \times 5.86) - (.17 \times 1.14) - (9.85 \times 2.10) = 382.28 - 41.69 = 340.59 \div 35 = 9.73$

Labels: bath, wall, counter/fridge

Room 4: $(28.73 \times 13.26) - (9.85 \times 2.10) - (3.13 \times 6.03) = 380.96 - 39.55 = 341.41 \div 35 = 9.75$

Labels: counter/fridge, bath **OKAY for 8**

Room 5: $(25.73 \times 19.23) - (3.23 \times 5.79) - (11.03 \times 2.10) - (5.188 \times 2.96) = 494.78 - 50.98 = 443.80 \div 35 = 12.68$

Labels: bath, counter/fridge, door, CFS **OKAY for 12**

Room 6: $(25.73 \times 19.48) - (3.27 \times 5.81) - (2.57 \times 4.99) - (11.03 \times 2.10) = 446.25 \div 35 = 12.75$

Labels: bath, door, counter, CFS **OKAY for 12**

S = Substantiated NS = Not Substantiated P = Pending (if applicable)

Operators/providers are required by regulations and statutes to be in compliance at all times.

Signature: Johanne Dalo
Print Name: Johanne Dalo
(OEC Representative)

CORRECTIVE PLAN SHALL BE RETURNED TO

Signature: Debora Murphy
Print Name: Debora Murphy
(Person in Charge)

OEC BY: pending prior to open

SUPPLEMENTAL REPORT OF INSPECTION

Name of Program/Provider: Town and Country Early Learning License # Pending Date: 7/31/23

Observations/Corrections needed:

Room 7: $(25.73 \times 19.46) - (5.78 \times 3.24) - (2.71 \times 5.02) - (2.10 \times 11.03) = 445.27 \div 35 = 12.7$ okay for 12

Room 8: $(25.85 \times 19.40) - (3.29 \times 5.79) - (2.67 \times 4.99) - (2.10 \times 11.03) = 445.96 \div 35 = 12.7$ okay for 12

Room 9: $(25.85 \times 19.43) - (5.77 \times 3.25) - (2.66 \times 5.01) - (2.10 \times 11.03) = 447.02 \div 35 = 12.7$ okay for 12

Room 10: $(19.45 \times 25.72) - (5.82 \times 3.31) - (5.03 \times 2.48) - (2.10 \times 11.03) = 445.36 \div 35 = 12.7$ okay for 12

Room 11: $(25.71 \times 19.57) - (3.26 \times 5.79) - (2.57 \times 5.02) - (2.10 \times 11.03) = 448.22 \div 35 = 12.8$ okay for 8 1/2

Room 12: $(19.45 \times 25.82) - (5.78 \times 3.25) - (5.03 \times 2.68) - (2.10 \times 11.03) = 446.77 \div 35 = 12.7$ okay for 12 8

S = Substantiated NS = Not Substantiated P = Pending (if applicable)

Operators/providers are required by regulations and statutes to be in compliance at all times.

Signature: [Signature]
 Print Name: Kathleen [Signature] (OEC Representative) Johanne Dalo

CORRECTIVE PLAN SHALL BE RETURNED TO

Signature: [Signature]
 Print Name: Debra Murphy (Person in Charge)

OEC BY: Pending pncr to open

SUPPLEMENTAL REPORT OF INSPECTION

Name of Program/Provider: Town and Country Early Learning Bath License # Pending Date: 7/31/23

Observations/Corrections needed:

Room 13: $(25.82 \times 24.45) - (3.10 \times 10.73) =$
Gross Motor $5498.04 \div 35 = 17.0$
Not included in capacity okay for 17

Toilets: 11 children / 3 staff
Sinks: 11 +

Total Capacity: 120
Under 3's: 48

S = Substantiated NS = Not Substantiated P = Pending (if applicable)

Operators/providers are required by regulations and statutes to be in compliance at all times.

Signature: [Signature]
(OEC Representative)

Print Name: Kellerman Johanna Dato

CORRECTIVE PLAN SHALL BE RETURNED TO

OEC BY: pending pnc to open

Signature: [Signature]
(Person in Charge)

Print Name: Debra Murphy

#11a #53

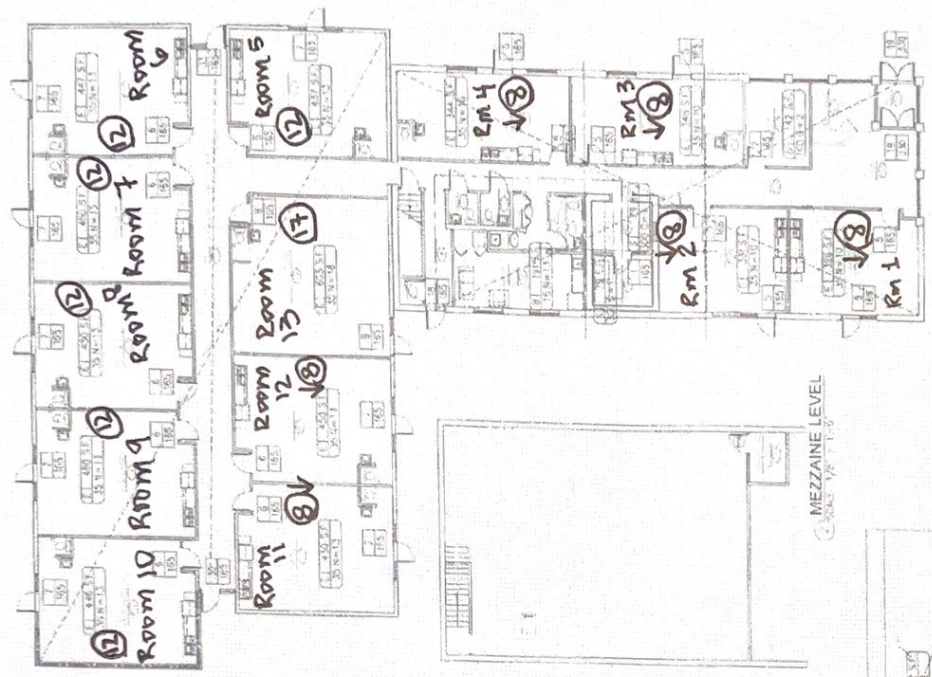
TOWN & COUNTRY
EARLY LEARNING CENTER

MHAI
Michigan Home Association, Inc.

LANDMARK
ARCHITECTURE & DESIGN

TOWN & COUNTRY
EARLY LEARNING CENTER
10000 E. GRAND AVENUE
ANN ARBOR, MI 48106-1300
September 12, 2022

CODE INFORMATION
A-0.2

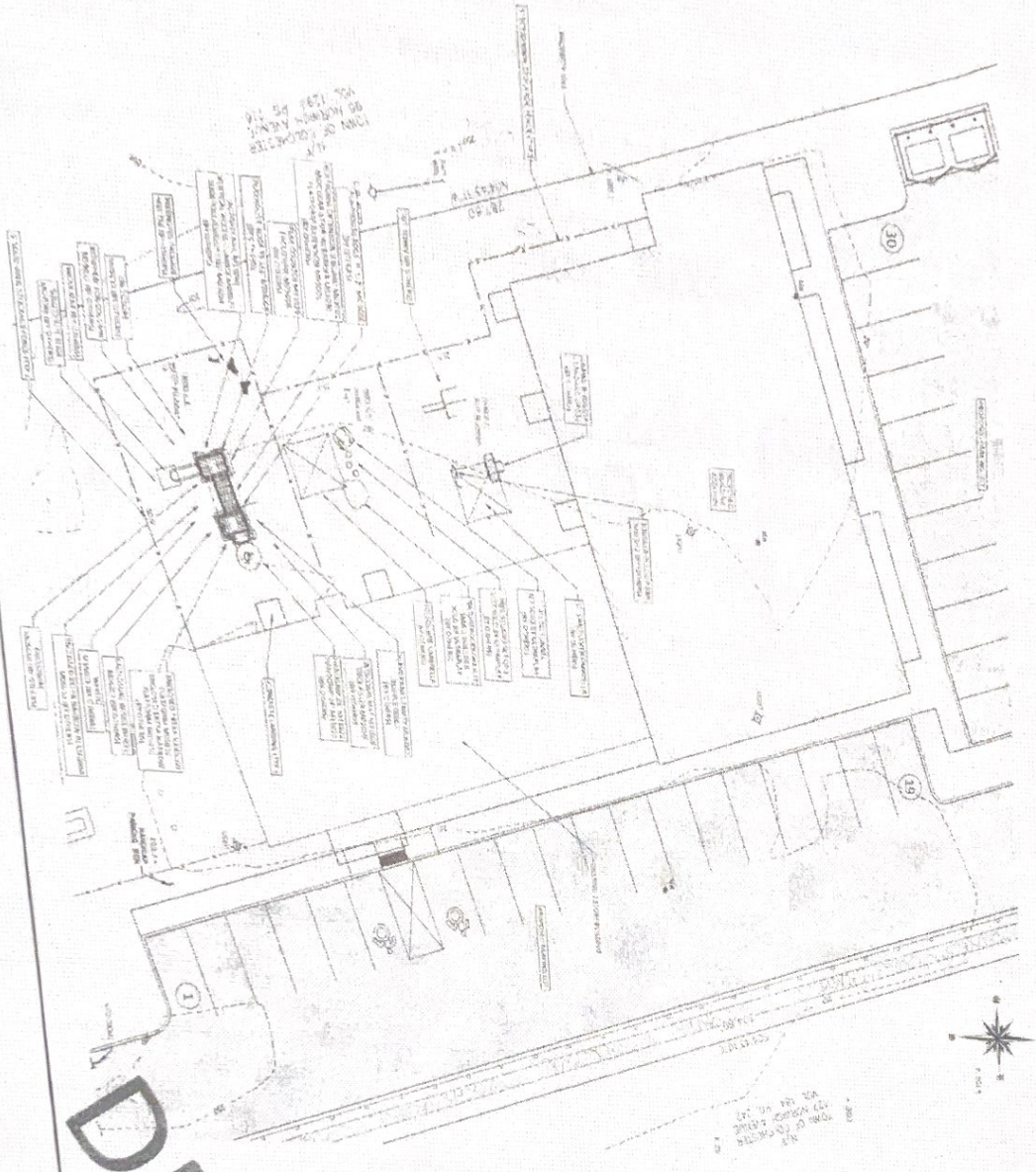


FIRST FLOOR PLAN

<p>1001-1002: Classroom</p> <p>1003-1004: Storage Area</p> <p>1005: Restroom</p> <p>1006: Office</p> <p>1007: Reception</p> <p>1008: Conference Room</p> <p>1009: Break Room</p> <p>1010: Storage</p> <p>1011: Office</p> <p>1012: Office</p> <p>1013: Office</p> <p>1014: Office</p> <p>1015: Office</p> <p>1016: Office</p> <p>1017: Office</p> <p>1018: Office</p> <p>1019: Office</p> <p>1020: Office</p> <p>1021: Office</p> <p>1022: Office</p> <p>1023: Office</p> <p>1024: Office</p> <p>1025: Office</p> <p>1026: Office</p> <p>1027: Office</p> <p>1028: Office</p> <p>1029: Office</p> <p>1030: Office</p> <p>1031: Office</p> <p>1032: Office</p> <p>1033: Office</p> <p>1034: Office</p> <p>1035: Office</p> <p>1036: Office</p> <p>1037: Office</p> <p>1038: Office</p> <p>1039: Office</p> <p>1040: Office</p> <p>1041: Office</p> <p>1042: Office</p> <p>1043: Office</p> <p>1044: Office</p> <p>1045: Office</p> <p>1046: Office</p> <p>1047: Office</p> <p>1048: Office</p> <p>1049: Office</p> <p>1050: Office</p> <p>1051: Office</p> <p>1052: Office</p> <p>1053: Office</p> <p>1054: Office</p> <p>1055: Office</p> <p>1056: Office</p> <p>1057: Office</p> <p>1058: Office</p> <p>1059: Office</p> <p>1060: Office</p> <p>1061: Office</p> <p>1062: Office</p> <p>1063: Office</p> <p>1064: Office</p> <p>1065: Office</p> <p>1066: Office</p> <p>1067: Office</p> <p>1068: Office</p> <p>1069: Office</p> <p>1070: Office</p> <p>1071: Office</p> <p>1072: Office</p> <p>1073: Office</p> <p>1074: Office</p> <p>1075: Office</p> <p>1076: Office</p> <p>1077: Office</p> <p>1078: Office</p> <p>1079: Office</p> <p>1080: Office</p> <p>1081: Office</p> <p>1082: Office</p> <p>1083: Office</p> <p>1084: Office</p> <p>1085: Office</p> <p>1086: Office</p> <p>1087: Office</p> <p>1088: Office</p> <p>1089: Office</p> <p>1090: Office</p> <p>1091: Office</p> <p>1092: Office</p> <p>1093: Office</p> <p>1094: Office</p> <p>1095: Office</p> <p>1096: Office</p> <p>1097: Office</p> <p>1098: Office</p> <p>1099: Office</p> <p>1100: Office</p>	<p>1001-1002: Classroom</p> <p>1003-1004: Storage Area</p> <p>1005: Restroom</p> <p>1006: Office</p> <p>1007: Reception</p> <p>1008: Conference Room</p> <p>1009: Break Room</p> <p>1010: Storage</p> <p>1011: Office</p> <p>1012: Office</p> <p>1013: Office</p> <p>1014: Office</p> <p>1015: Office</p> <p>1016: Office</p> <p>1017: Office</p> <p>1018: Office</p> <p>1019: Office</p> <p>1020: Office</p> <p>1021: Office</p> <p>1022: Office</p> <p>1023: Office</p> <p>1024: Office</p> <p>1025: Office</p> <p>1026: Office</p> <p>1027: Office</p> <p>1028: Office</p> <p>1029: Office</p> <p>1030: Office</p> <p>1031: Office</p> <p>1032: Office</p> <p>1033: Office</p> <p>1034: Office</p> <p>1035: Office</p> <p>1036: Office</p> <p>1037: Office</p> <p>1038: Office</p> <p>1039: Office</p> <p>1040: Office</p> <p>1041: Office</p> <p>1042: Office</p> <p>1043: Office</p> <p>1044: Office</p> <p>1045: Office</p> <p>1046: Office</p> <p>1047: Office</p> <p>1048: Office</p> <p>1049: Office</p> <p>1050: Office</p> <p>1051: Office</p> <p>1052: Office</p> <p>1053: Office</p> <p>1054: Office</p> <p>1055: Office</p> <p>1056: Office</p> <p>1057: Office</p> <p>1058: Office</p> <p>1059: Office</p> <p>1060: Office</p> <p>1061: Office</p> <p>1062: Office</p> <p>1063: Office</p> <p>1064: Office</p> <p>1065: Office</p> <p>1066: Office</p> <p>1067: Office</p> <p>1068: Office</p> <p>1069: Office</p> <p>1070: Office</p> <p>1071: Office</p> <p>1072: Office</p> <p>1073: Office</p> <p>1074: Office</p> <p>1075: Office</p> <p>1076: Office</p> <p>1077: Office</p> <p>1078: Office</p> <p>1079: Office</p> <p>1080: Office</p> <p>1081: Office</p> <p>1082: Office</p> <p>1083: Office</p> <p>1084: Office</p> <p>1085: Office</p> <p>1086: Office</p> <p>1087: Office</p> <p>1088: Office</p> <p>1089: Office</p> <p>1090: Office</p> <p>1091: Office</p> <p>1092: Office</p> <p>1093: Office</p> <p>1094: Office</p> <p>1095: Office</p> <p>1096: Office</p> <p>1097: Office</p> <p>1098: Office</p> <p>1099: Office</p> <p>1100: Office</p>
---	---

2
330

#12a



DRAFT

1111 N. BROAD AVENUE
DURHAM, NC 27701
919.486.1111

- LEGEND
- PLAY AREA
- PLAY EQUIPMENT
- PLAY STRUCTURE
- PLAY PLATFORM
- PLAY SURFACE
- PLAY SURFACE MATERIAL
- PLAY SURFACE COLOR
- PLAY SURFACE PATTERN
- PLAY SURFACE TEXTURE
- PLAY SURFACE SOUND
- PLAY SURFACE SMELL
- PLAY SURFACE TASTE
- PLAY SURFACE TOUCH
- PLAY SURFACE FEEL
- PLAY SURFACE HEAR
- PLAY SURFACE SEE
- PLAY SURFACE SMELL
- PLAY SURFACE TASTE
- PLAY SURFACE TOUCH
- PLAY SURFACE FEEL
- PLAY SURFACE HEAR
- PLAY SURFACE SEE



NO.	DATE	DESCRIPTION
1	10/15/11	ISSUED FOR PERMITTING
2	11/15/11	REVISED PER PERMITTING COMMENTS
3	12/15/11	REVISED PER PERMITTING COMMENTS
4	01/15/12	REVISED PER PERMITTING COMMENTS
5	02/15/12	REVISED PER PERMITTING COMMENTS
6	03/15/12	REVISED PER PERMITTING COMMENTS
7	04/15/12	REVISED PER PERMITTING COMMENTS
8	05/15/12	REVISED PER PERMITTING COMMENTS
9	06/15/12	REVISED PER PERMITTING COMMENTS
10	07/15/12	REVISED PER PERMITTING COMMENTS
11	08/15/12	REVISED PER PERMITTING COMMENTS
12	09/15/12	REVISED PER PERMITTING COMMENTS
13	10/15/12	REVISED PER PERMITTING COMMENTS
14	11/15/12	REVISED PER PERMITTING COMMENTS
15	12/15/12	REVISED PER PERMITTING COMMENTS
16	01/15/13	REVISED PER PERMITTING COMMENTS
17	02/15/13	REVISED PER PERMITTING COMMENTS
18	03/15/13	REVISED PER PERMITTING COMMENTS
19	04/15/13	REVISED PER PERMITTING COMMENTS
20	05/15/13	REVISED PER PERMITTING COMMENTS
21	06/15/13	REVISED PER PERMITTING COMMENTS
22	07/15/13	REVISED PER PERMITTING COMMENTS
23	08/15/13	REVISED PER PERMITTING COMMENTS
24	09/15/13	REVISED PER PERMITTING COMMENTS
25	10/15/13	REVISED PER PERMITTING COMMENTS
26	11/15/13	REVISED PER PERMITTING COMMENTS
27	12/15/13	REVISED PER PERMITTING COMMENTS
28	01/15/14	REVISED PER PERMITTING COMMENTS
29	02/15/14	REVISED PER PERMITTING COMMENTS
30	03/15/14	REVISED PER PERMITTING COMMENTS
31	04/15/14	REVISED PER PERMITTING COMMENTS
32	05/15/14	REVISED PER PERMITTING COMMENTS
33	06/15/14	REVISED PER PERMITTING COMMENTS
34	07/15/14	REVISED PER PERMITTING COMMENTS
35	08/15/14	REVISED PER PERMITTING COMMENTS
36	09/15/14	REVISED PER PERMITTING COMMENTS
37	10/15/14	REVISED PER PERMITTING COMMENTS
38	11/15/14	REVISED PER PERMITTING COMMENTS
39	12/15/14	REVISED PER PERMITTING COMMENTS
40	01/15/15	REVISED PER PERMITTING COMMENTS
41	02/15/15	REVISED PER PERMITTING COMMENTS
42	03/15/15	REVISED PER PERMITTING COMMENTS
43	04/15/15	REVISED PER PERMITTING COMMENTS
44	05/15/15	REVISED PER PERMITTING COMMENTS
45	06/15/15	REVISED PER PERMITTING COMMENTS
46	07/15/15	REVISED PER PERMITTING COMMENTS
47	08/15/15	REVISED PER PERMITTING COMMENTS
48	09/15/15	REVISED PER PERMITTING COMMENTS
49	10/15/15	REVISED PER PERMITTING COMMENTS
50	11/15/15	REVISED PER PERMITTING COMMENTS
51	12/15/15	REVISED PER PERMITTING COMMENTS
52	01/15/16	REVISED PER PERMITTING COMMENTS
53	02/15/16	REVISED PER PERMITTING COMMENTS
54	03/15/16	REVISED PER PERMITTING COMMENTS
55	04/15/16	REVISED PER PERMITTING COMMENTS
56	05/15/16	REVISED PER PERMITTING COMMENTS
57	06/15/16	REVISED PER PERMITTING COMMENTS
58	07/15/16	REVISED PER PERMITTING COMMENTS
59	08/15/16	REVISED PER PERMITTING COMMENTS
60	09/15/16	REVISED PER PERMITTING COMMENTS
61	10/15/16	REVISED PER PERMITTING COMMENTS
62	11/15/16	REVISED PER PERMITTING COMMENTS
63	12/15/16	REVISED PER PERMITTING COMMENTS
64	01/15/17	REVISED PER PERMITTING COMMENTS
65	02/15/17	REVISED PER PERMITTING COMMENTS
66	03/15/17	REVISED PER PERMITTING COMMENTS
67	04/15/17	REVISED PER PERMITTING COMMENTS
68	05/15/17	REVISED PER PERMITTING COMMENTS
69	06/15/17	REVISED PER PERMITTING COMMENTS
70	07/15/17	REVISED PER PERMITTING COMMENTS
71	08/15/17	REVISED PER PERMITTING COMMENTS
72	09/15/17	REVISED PER PERMITTING COMMENTS
73	10/15/17	REVISED PER PERMITTING COMMENTS
74	11/15/17	REVISED PER PERMITTING COMMENTS
75	12/15/17	REVISED PER PERMITTING COMMENTS
76	01/15/18	REVISED PER PERMITTING COMMENTS
77	02/15/18	REVISED PER PERMITTING COMMENTS
78	03/15/18	REVISED PER PERMITTING COMMENTS
79	04/15/18	REVISED PER PERMITTING COMMENTS
80	05/15/18	REVISED PER PERMITTING COMMENTS
81	06/15/18	REVISED PER PERMITTING COMMENTS
82	07/15/18	REVISED PER PERMITTING COMMENTS
83	08/15/18	REVISED PER PERMITTING COMMENTS
84	09/15/18	REVISED PER PERMITTING COMMENTS
85	10/15/18	REVISED PER PERMITTING COMMENTS
86	11/15/18	REVISED PER PERMITTING COMMENTS
87	12/15/18	REVISED PER PERMITTING COMMENTS
88	01/15/19	REVISED PER PERMITTING COMMENTS
89	02/15/19	REVISED PER PERMITTING COMMENTS
90	03/15/19	REVISED PER PERMITTING COMMENTS
91	04/15/19	REVISED PER PERMITTING COMMENTS
92	05/15/19	REVISED PER PERMITTING COMMENTS
93	06/15/19	REVISED PER PERMITTING COMMENTS
94	07/15/19	REVISED PER PERMITTING COMMENTS
95	08/15/19	REVISED PER PERMITTING COMMENTS
96	09/15/19	REVISED PER PERMITTING COMMENTS
97	10/15/19	REVISED PER PERMITTING COMMENTS
98	11/15/19	REVISED PER PERMITTING COMMENTS
99	12/15/19	REVISED PER PERMITTING COMMENTS
100	01/15/20	REVISED PER PERMITTING COMMENTS

PLAYGROUND PLAN
TOWN & COUNTRY EARLY LEARNING CENTERS
DESIGNED BY
JOSEPH PUGLIARINI
ARCHITECTS

DUTTON ASSOCIATES, LLC
LAND SURVEYORS AND CIVIL ENGINEERS
10101 BROADWAY, SUITE 100
DURHAM, NC 27703
919.486.1111
WWW.DUTTONASSOCIATES.COM

